



Cassette awning

markilux MX-4

Avant-garde cassette awning - both functional and attractive - with varied modern lighting technology.

Separate lighting

markilux MX-4 wall light

Modern outdoor light in a design perfectly coordinated with the markilux MX-4.



reddot winner 2023

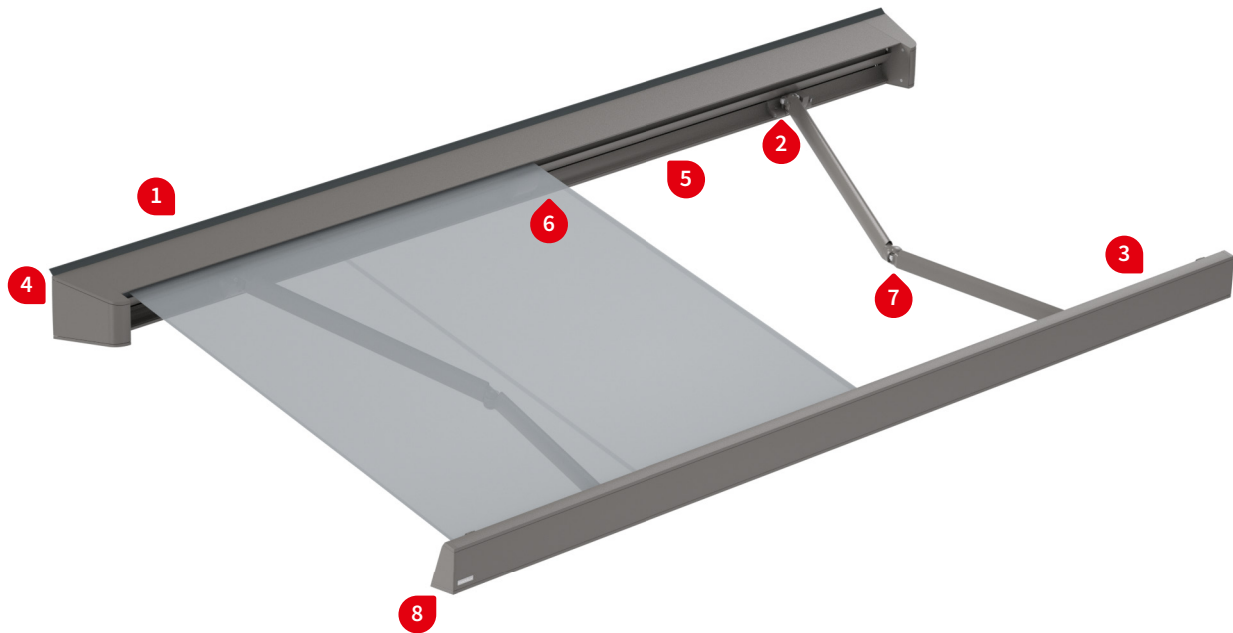


[markilux.com](https://www.markilux.com)

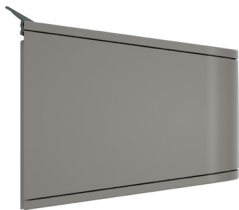
markilux
safe timeless beautiful

Product characteristics

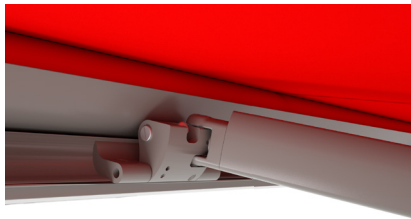
Wind resistance class 2
Beaufort 5 → 7.5–10.4 m/s → 28–37 km/h → 17–23 mph



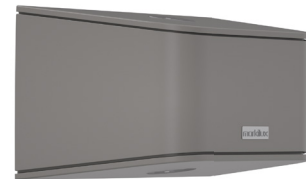
1 Face fixture, bracket concealed



2 arm bearer with tilt device technology, integrated windlock mechanism



markilux MX-4 wall light, perfectly coordinated design



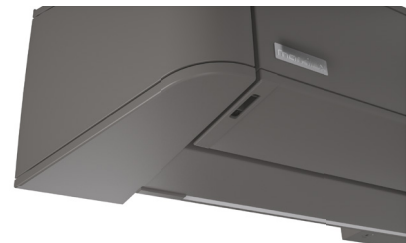
3 LED Spots in the front profile ¹⁾



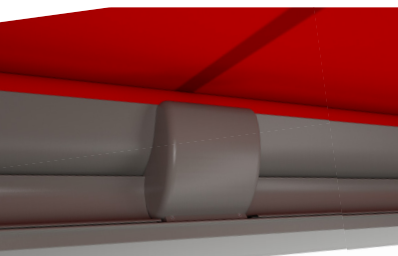
4 LED Spots in the end caps of the cassette, on both sides ¹⁾



5 LED-Line in the cassette ¹⁾



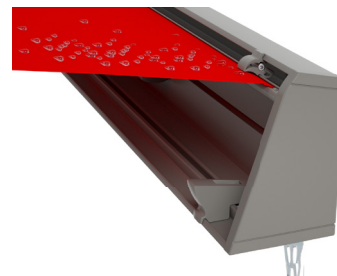
6 rolltex bearing for the roller tube, used in larger awning widths



7 bionic tendon and hidden cable duct in the arms



8 concealed gutter with water drainage holes to the side



1) Optional accessories

Product characteristics

Description

- Cassette awning in avant-garde design with clear lines and multiple lighting options in warm white and coloured, suitable for shading large areas

Special features

- Radio-controlled motor io technology as standard
- Combinable lighting options in the awning: LED-Spots RGB-WW in the front profile, LED-Spots RGB-WW in the side caps bottom / top or both (always the same on both sides), LED-Line RGB-WW below the cassette, Philips Hue Spots RGB-WW in the side caps bottom / top or both (always the same on both sides)
- Separate MX-4 wall light in perfectly coordinated design as supplementary lighting option: markilux Spots RGB-WW bottom / top or both, Philips Hue Spots RGB-WW bottom or top
- individual combination of awning colour and screen profile colour possible
- Almost invisible wall mounting brackets ensure an optically flush cassette connection to the building
- The tilt device technology with integrated windlock mechanism on the folding arms ensures the awning closes cleanly whatever the pitch

Dimensions

- Cassette in the standard version: depth 275 mm, height 235 mm
- Single unit: minimum width 217 cm at the smallest projection of 150 cm, maximum width 600 cm at the largest projection of 400 cm or 700 cm x projection of 350 cm
- Also available as linked awning up to 3 fields with junction roller, optionally with continuous fabric (max. 2 fields / 15° inclination / projection 350 cm)

Roller tube and lateral bearings

- Round roller tube Ø 85 mm with keyway, galvanised steel – excellent stability, ensures near perfect cover performance even at the largest widths
- Lateral bearing cassette made of die-cast aluminium, powder coated

Blind profiles

- extruded aluminium, in façade quality, powder coated
- One-piece cassette with integrated groove for lighting equipment
- Integrated fabric cover – optimum protection of the awning fabric against the effects of the weather
- Front profile with integrated rain gutter and screen

Folding arms

- Profiles in extruded aluminium, in façade quality, powder coated
- Moving parts made of drop-forged aluminium – the arms are therefore extremely fracture resistant
- Pivot bolts in stainless steel run in Teflon-coated bronze bushes - practically maintenance free, virtually silent and extremely hard wearing
- Power transference for fabric tensioning by innovative markilux Bionic tendon in the elbow joint, high tensile high-tech fibre – low-friction, noiseless, insensitive to corrosion and UV-resistant

Side caps

- Side caps cassette and integrated end cap inserts made of die-cast aluminium, powder-coated
- End caps of the front profile made of die-cast aluminium, powder-coated, with water drainage

Fixture brackets

- Face fixture
- Extruded aluminium, powder coated
- Awning pitch adjustment range 5° to 25°
- spacer plates, stand-off brackets and other accessories are available

01 **Frame and end cap colours**

02 markilux frame colours without surcharge

03 traffic white, RAL 9016

metallic aluminium, RAL 9006

grey brown, similar to RAL 8019



05 off-white textured finish, 5233 ¹⁾

06 stone grey metallic, 5215 ¹⁾

07 anthracite metallic, 5204 ¹⁾



09 havana brown textured finish, 5229 ¹⁾

10 **Non-standard powder-coated finish**

Bespoke frame colours incur a surcharge – matt, metallic, finely textured and pearl finishes as well as other colour ranges (DB, Tiger etc.) on request. All frame colours are available at a surcharge with enhanced corrosion protection.

Colours may differ slightly from those depicted in both hue and finish.



12 **1)** textured finish

Combination options

All standard front panel colours can be freely combined with the standard frame colours.

Frame traffic white, RAL 9016

Styling panel / end cap insert metallic aluminium, RAL 9006



Frame havana brown textured finish 5229

Styling panel / end cap insert off-white textured finish 5233



Frame anthracite metallic 5204

Styling panel / end cap insert stone grey metallic 5215



Frame stone grey metallic 5215

Styling panel / end cap insert anthracite metallic 5204



01

02

03

04

05

06

07

08

09

10

11

12

13

14

15

16

17

18

19

Additional front panel colours

The additional styling panel colours can be combined at will with all the standard frame colours ¹⁾

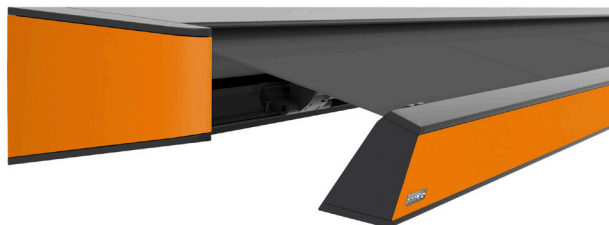
light ivory RAL 1015 matt

new champagne 5062 matt



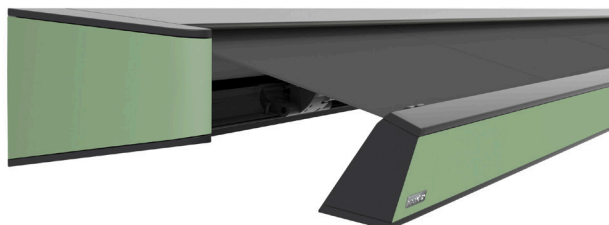
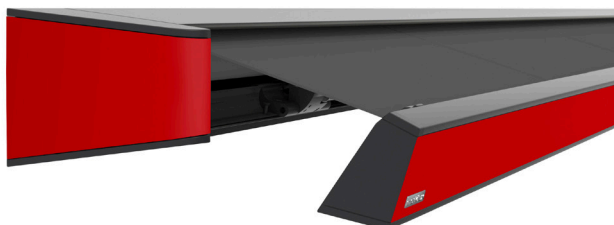
golden yellow RAL 1004 matt

deep orange RAL 2011 matt



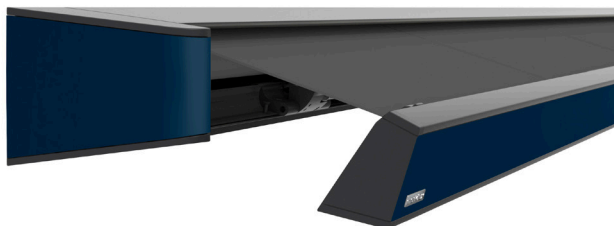
crimson RAL 3002 matt

pale green RAL 6021 matt



steel blue RAL 5011 matt

jet black RAL 9005 matt







Colours may differ slightly from those depicted in both hue and finish.

¹⁾ Illustrations by way of example; fabric pattern with matching front panel.

Dimensions and configuration options


Single unit


Order dimensions		Overall awning width										Minimum awning width			
		250	300	350	400	450	500	550	600	650	700	Motor			
		217 250	251 300	301 350	351 400	401 450	451 500	501 550	551 600	601 650	651 700				
H	150	1)										230	217	480	467
	200	—	1)									280	267	530	517
	250	—	—	1)								330	317	580	567
	300	—	—	—	1)							380	367	630	617
	350	—	—	—	—	1)				—	1)	430	417	680	667
	400	—	—	—	—	—	1)			—	—	480	467	—	—


Dimensions in cm


1) = please note the minimum widths!


H = projection


 = 2 folding arms
2 brackets


 = 2 folding arms
3 brackets, 1 rolltex bearing

 = 3 folding arms
4 brackets, 2 rolltex bearings

 = 2 standard arms

 = 2 bespoke arms
(surcharge)

 = 3 standard arms

 = 3 bespoke arms
(incurs a surcharge
except for 700 x 350 cm)

Operation	standard	optional
crank handle	—	—
spring-assisted crank handle	—	—
hard-wired motor	—	✓
silentec motor (optionally with an external io receiver) ¹⁾	—	—
radio-controlled motor io, 868MHz	✓	—
radio-controlled motor RTS, 433MHz	—	✓
868 Mhz radio-controlled motor io with manual override ¹⁾	—	—

1) For awnings with a maximum of 2 arms

Coupled Awning (only with motor drive) ¹⁾

2 fields, 1 motor, maximum width 1400 cm
3 fields, 1 motor, maximum width 1950 cm
junction roller
optional One-piece cover (maximum 2 fields / 15° pitch / 350 cm projection)

1) N.B! Important background information can be found in the chapter "General Information", in the section "Coupled Awnings"

Awning cover	fabric pattern no.	standard	optional
sunvas	300.. - 315..	✓	—
sunsilk	324.. / 328.. / 369..	✓	—
sunbow	411.. - 427..	✓	—
smart art	340..	—	✓
perla FR	371.. / 372..	—	✓

Shadeplus

not available

Optional accessories

LED-Line RGB-WW in the cassette
LED-Spots RGB-WW in the side caps bottom / top
Philips Hue Spots RGB-WW in the side caps bottom / top
LED-Spots RGB-WW in the front profile
markilux MX-4 wall light
Infrared heater 2500 W
Infrared heater 2500 W with integrated radio-controlled receiver 868 MHz io

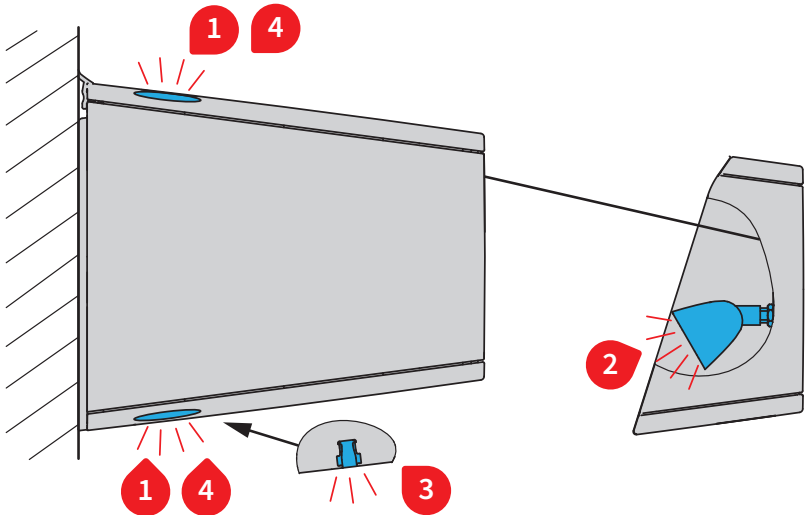
Fixture options

face fixture bracket 200 mm	62143.
face fixture bracket A 300 mm	60775.
fixture plate B 300 × 400 × 12 mm	75327.
markilux panel 250 × 230 × 49 mm	76308.
markilux panel continuous	701104
stand-off bracket 80–300 mm	77970.
spacer plate wall 180 x 150 x 12 mm	74989.
spacer plate wall 180 x 150 x 20 mm	749881.
cover plate for spacer plate and stand-off brackets in the case of external insulation 320 x 210 x 2 mm	71842.

Lighting options

The light sources RGB-WW can be ordered individually for every lighting option. When there are several lighting options, one standard control technology must be ordered per awning.

Note: With a 5-channel remote control io, a maximum of 2 RGB-WW lighting options can be controlled alongside the io motor of the awning because for each lighting option, an individual channel is required both for coloured light (RGB) and for warm white (WW).



Lighting options

1) LED-Spots RGB-WW in side caps, bottom/top ¹⁾
2) LED-Spots RGB-WW in the front profile
3) LED-Line RGB-WW in the cassette
4) Philips Hue Spots RGB-WW in side caps, bottom/top ¹⁾

1) Always the same on both sides
RGB-WW = RGB colour light change and warm white

Controls

	standard	optional
Radio-controlled dimmer io 868 MHz ¹⁾	✓	—
Dimmer app (Zigbee) ¹⁾	—	✓

1) For RGB-WW light sources including control

Please note:

- 1) The control of the lighting options is primarily based on the radio technology of the awning motor.
- 2) Light sources in RGB-WW can always be controlled with Zigbee-capable components regardless of RTS or io technology for the awning motors.

Lighting options

The light sources RGB-WW can be ordered individually for every lighting option. When there are several lighting options, one standard control technology must be ordered per awning.

Note: With a 5-channel remote control io, a maximum of 2 RGB-WW lighting options can be controlled alongside the io motor of the awning because for each lighting option, an individual channel is required both for coloured light (RGB) and for warm white (WW).

1 / 2 Technical specification LED-Spots

Operating voltage	230 V / 50 Hz
Power output of one LED spotlight	7 W / 5 W
Light source	LED (24 V)
Number of transformers	1 unit
Light temperature (RGB-WW)	RGB colour light change and warm white
IP protection type	IP 44
Service life	approx. 20.000 h
Plug connection (RGB-WW)	Mizu-P25

4 Technical details LED-Spots Philips Hue

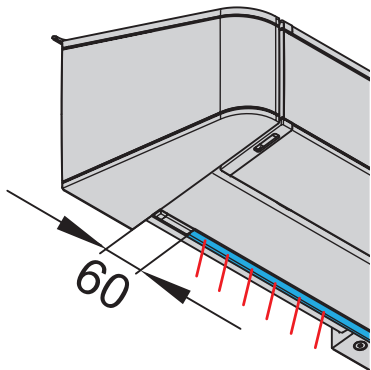
Operating voltage	230 V / 50 Hz
Power output of one LED spotlight	5,7 W
Light source	LED (230 V)
Number of transformers	1 unit
light temperature	RGB colour light change and white to warm white
IP protection type	IP 44
Service life	approx. 15.000 h
Plug connection	GU10

For the version with Phillips Hue, a ZigBee-capable "bridge" is required on site.

3 Technical details LED-Line in the cassette

Operating voltage	230 V / 50 Hz
Power output per metre (RGB-WW)	11 W / metre
Number of LEDs per metre (RGB-WW)	144 LEDs/ metre
Light source	LED (24 V)
Number of transformers	1 unit
Light temperature (RGB-WW)	RGB colour light change and warm white
IP protection type	IP 44
Service life	approx. 15.000 h

Distance bewteen the side caps and the LED-Line



LED-Line RGB-WW

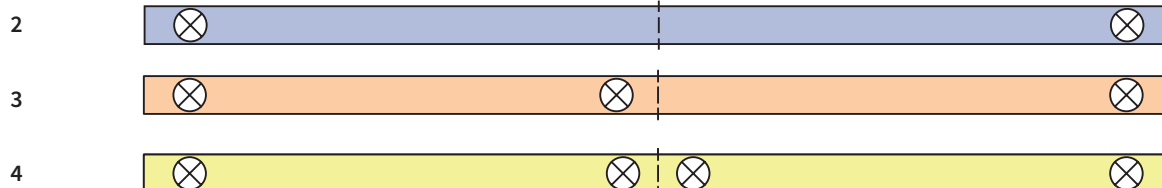
dimensions in mm

Lighting options

LED spotlight distribution in the front profile

Number of the LED
spotlights

2 folding arms



3 folding arms



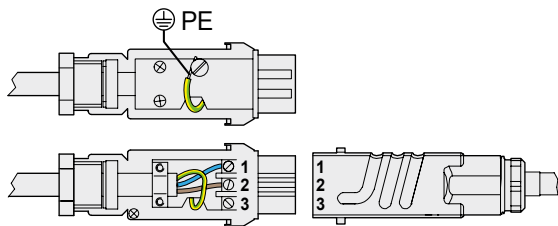
Number and distribution of the LED spotlights in the front profile

Overall awning width	Projection					
	150	200	250	300	350	400
243–250	2	—	—	—	—	—
251–264	—	—	—	—	—	—
265–293	2	—	—	—	—	—
294–300	2	2	—	—	—	—
301–344	3	2	—	—	—	—
345–350	3	2	2	—	—	—
351–393	3	3	2	—	—	—
394–400	3	3	2	2	—	—
401–414	3	3	3	—	—	—
415–450	3	3	3	2	—	—
451–464	4	4	4	4	—	—
465–500	4	4	4	4	2	—
501–514	4	4	4	4	4	—
515–550	4	4	4	4	4	2
551–600	4	4	4	4	4	4
601–650	4	4	4	4	—	—
651–675	4	4	4	4	—	—
676–700	4	4	4	4	—	—

Dimensions in cm

Electrical connection

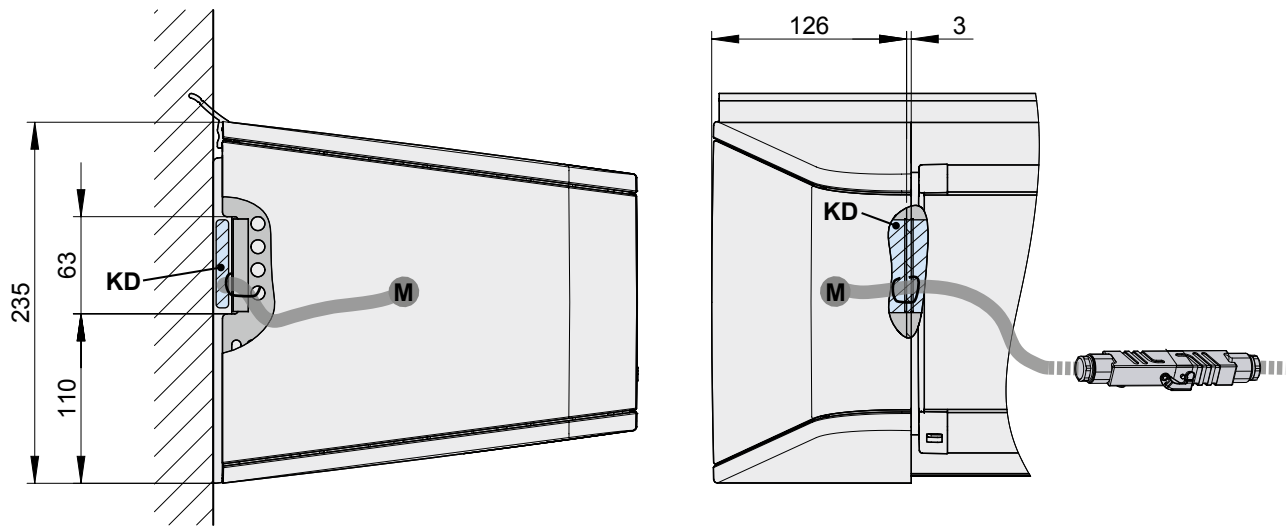
Depending on the accessories one to two power supply cables (awning motor / lighting)



- 3 × 1.5 mm²**
1 = Neutral N (blue)
2 = Live L (brown)
3 = Free
PE = Earthing equipment (green / yellow)

Plug coupling

Motor cable exit point

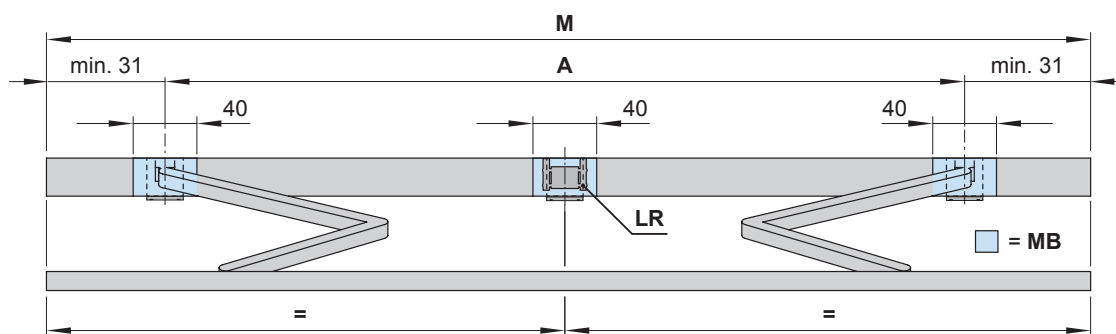


- KD** = Cable outlet
M = Motor

Dimensions in mm

Bracket fixture range

Awning with 2 folding arms



Dimensions in cm

		Awning width								
		250	300	350	400	450	500	550	600	650
Order dimensions		217	251	301	351	401	451	501	551	601
		250	300	350	400	450	500	550	600	650
		Arm position A								
H	150	169 ¹⁾	190	220	270	300	350	400	450	500
	200	—	219 ¹⁾	220	270	300	350	400	450	500
	250	—	—	269 ¹⁾	270	300	350	400	450	500
	300	—	—	—	319 ¹⁾	340	350	400	450	500
	350	—	—	—	—	369 ¹⁾	390	400	450	—
	400	—	—	—	—	—	419 ¹⁾	440	450	—
BHT		No. of brackets No. of fixing points								
W	20	2 8						3 12		
BP		A 2 16 B 2 8						A 2 16 and 1 × 62143. 4		B 2 8
DP		—						—		1

dimensions in cm

1) Dimension **A** is only valid for standard arms! In the case of bespoke arms: **A** – 13 cm. please note the minimum widths!
If the brackets cannot be positioned in accordance with this table, make sure the actual dimensions are noted on the order form!

A = arm position

BHT = bracket width

BP = spreader plate **A** or **B**, to be positioned behind the folding arm

DP = spacer plate 74989., to be positioned behind the rolltex bearing, in the case of spreader plate **B**

H = **order dimension** = projection

LR = a rolltex bearing with accompanying bracket is always placed under a central seam (depends on the awning size)

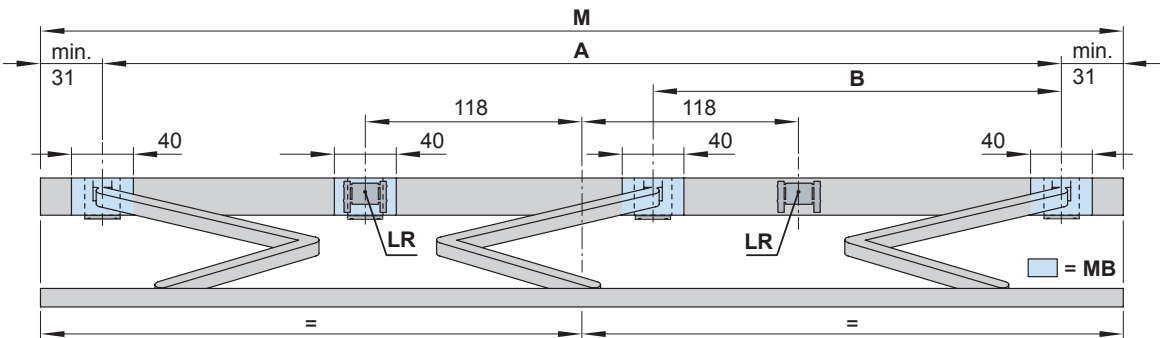
M = **order dimensions** = awning width

MB = bracket fixture range

W = face fixture

Bracket fixture range

Awning with 3 folding arms



Dimensions in cm

		Overall awning width					
		700					
Order dimensions		651 674		675 700		667 700	
		Arm position					
H		A	B	A	B	A	B
	150	570	250	590	260	—	—
	200	570	235	590	245	—	—
	250	570	220	590	230	—	—
	300	570	210	590	220	—	—
	350	—	—	—	—	619	220
	400	—	—	—	—	—	—
BHT		No. of brackets No. of fixing points					
W	20	4 16					
BP		A 3 24 and 1 × 62143. 4			B 3 12		
DP		—			1		

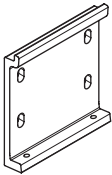
dimensions in cm

If the brackets cannot be positioned in accordance with this table, make sure the actual dimensions are noted on the order form!

- A** = arm position
- B** = arm position
- BHT** = bracket width
- BP** = spreader plate **A** or **B**, to be positioned behind the folding arm
- DP** = spacer plate 74989., to be positioned behind the rolltex bearing, in the case of spreader plate B
- H** = **order dimension** = extension
- LR** = a rolltex bearing with accompanying bracket is always placed under a central seam (depends on the awning size)
- M** = **order width** = awning width
- MB** = bracket fixture range
- W** = face fixture

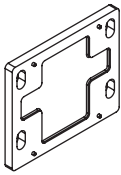
Face fixture

Fixtures, fittings and accessories



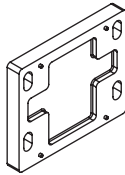
face fixture bracket
200 mm

62143.



spacer plate for face
fixture
180 x 150 x 12 mm

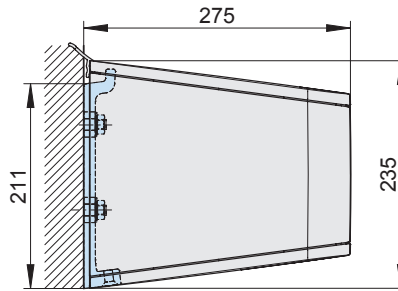
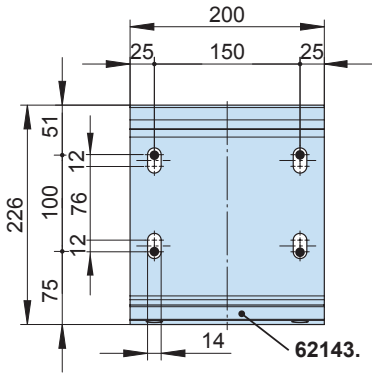
74989.



spacer plate for face
fixture
180x 150 x 20 mm; black

N.B.!
stack to a max. height of
200 mm

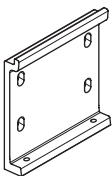
749881



dimensions in mm

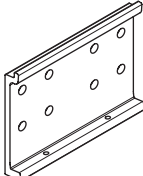
Face fixture with wall bracket A

Fixtures, fittings and accessories



face fixture bracket
200 mm

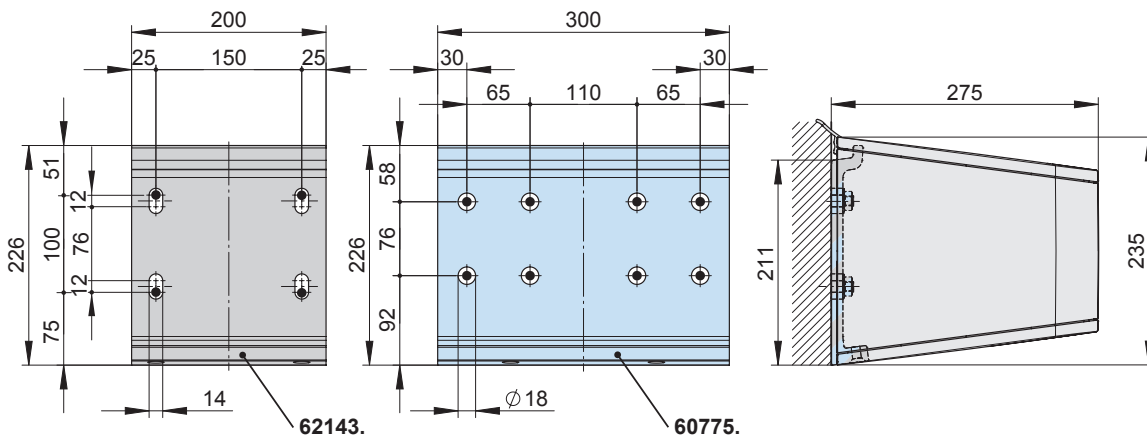
62143.



face fixture A
300 mm

60775.

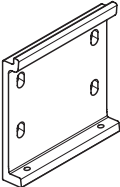
Position of face fixture brackets in the case of 2 folding arms Position of face fixture brackets in the case of 3 folding arms



dimensions in mm

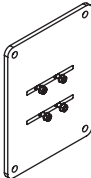
Face fixture with spreader plate B

Fixtures, fittings and accessories



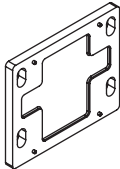
face fixture bracket
200 mm

62143.



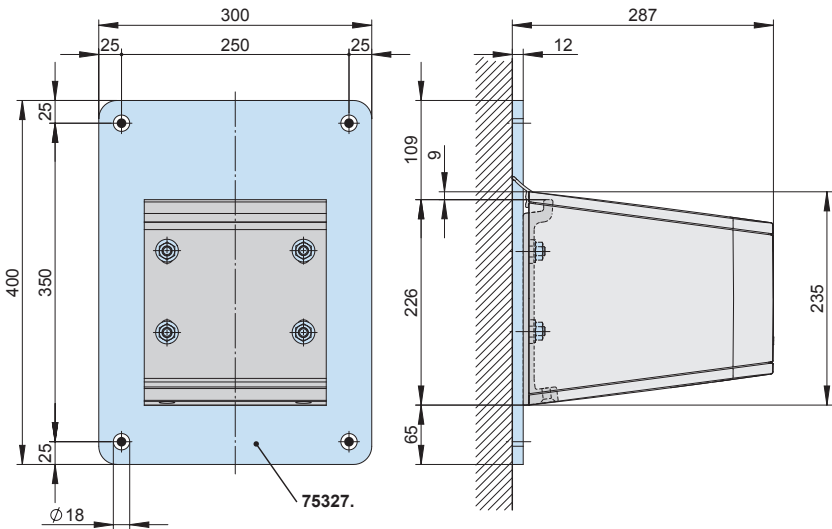
spreader plate B
300 x 400 x 12 mm

75327.



spacer plate for face
fixture
180 x 150 x 12 mm

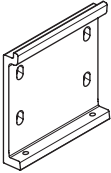
74989.



dimensions in mm

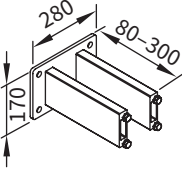
Face fixture with stand-off bracket

Fixtures, fittings and accessories



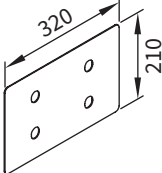
face fixture bracket
200 mm

62143.



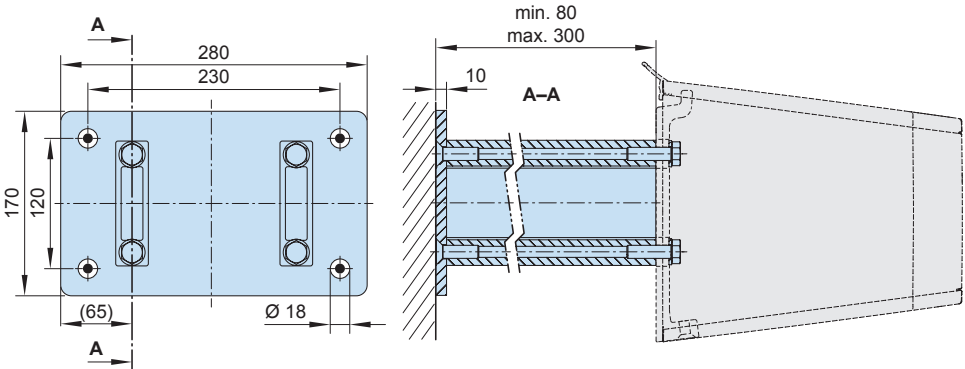
stand-off bracket
80-300 mm
incl. insulating element

77970.



cover plate
for spacer plate and
stand-off brackets in
the case of external
insulation
320 x 210 x 2 mm

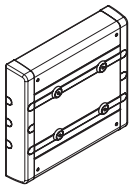
71842.



dimensions in mm

Face fixture using the markilux panel 250 mm wide

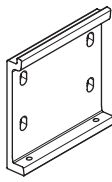
Fixtures, fittings and accessories



markilux panel
250 × 230 × 49 mm

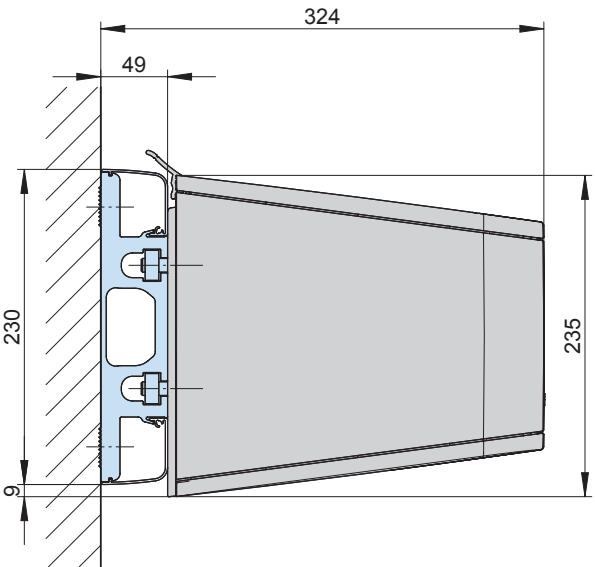
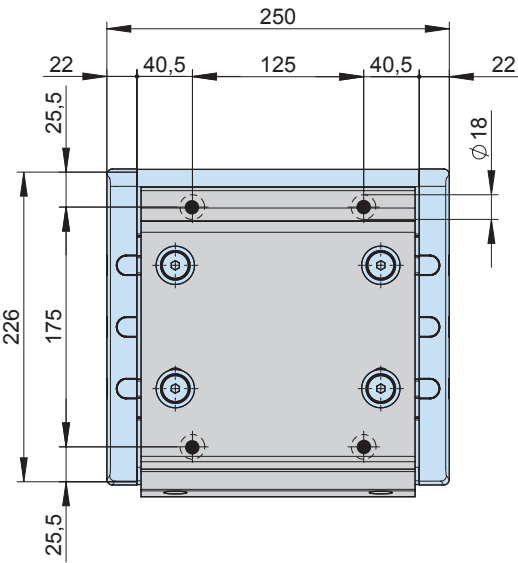
with decorative profiles
and end caps

76308.



face fixture bracket
200 mm

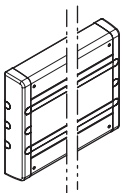
62143.



dimensions in mm

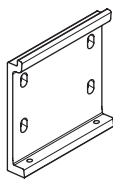
Face fixture with markilux panel continuous

Fixtures, fittings and accessories



markilux panel continuous
with decorative profiles and end caps

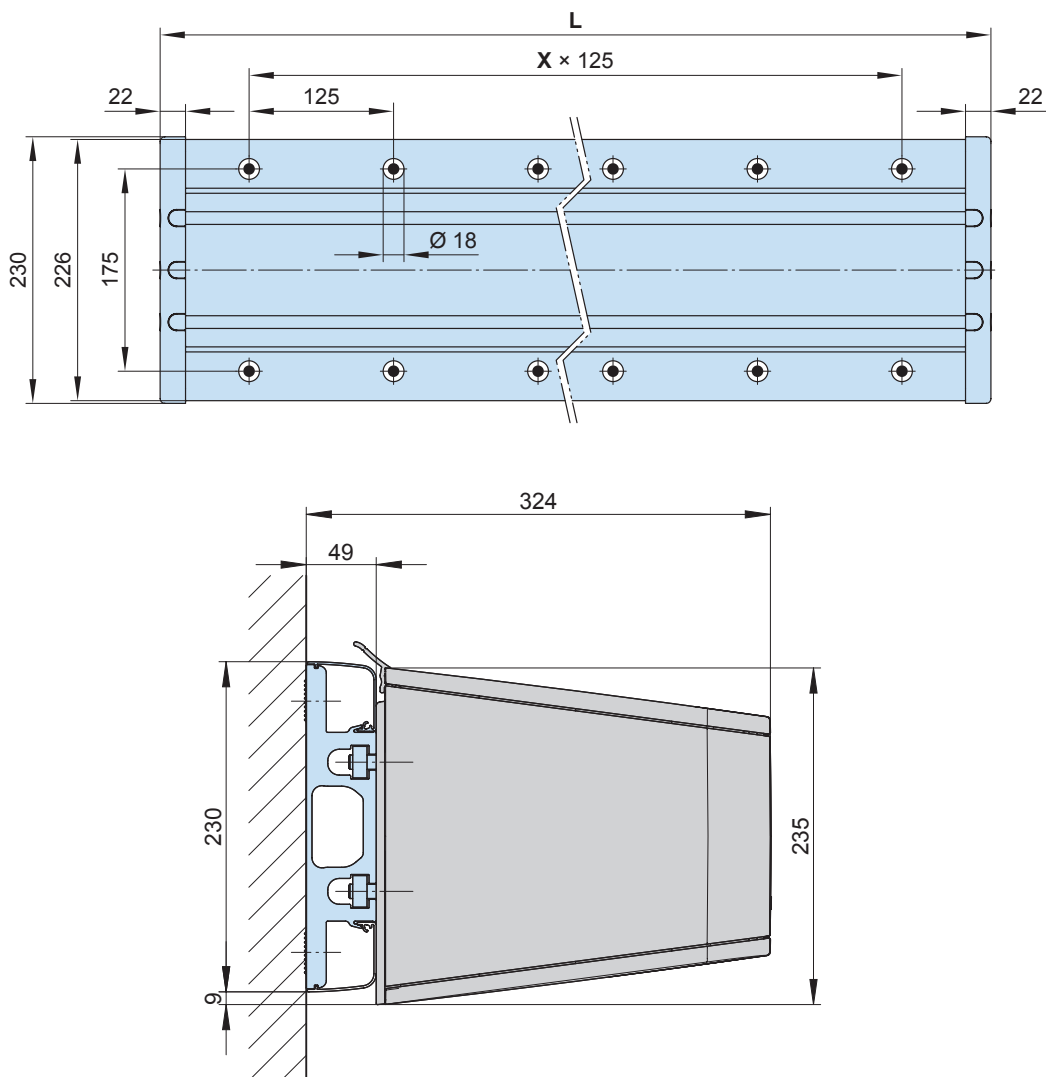
701104



face fixture bracket
200 mm

62143.

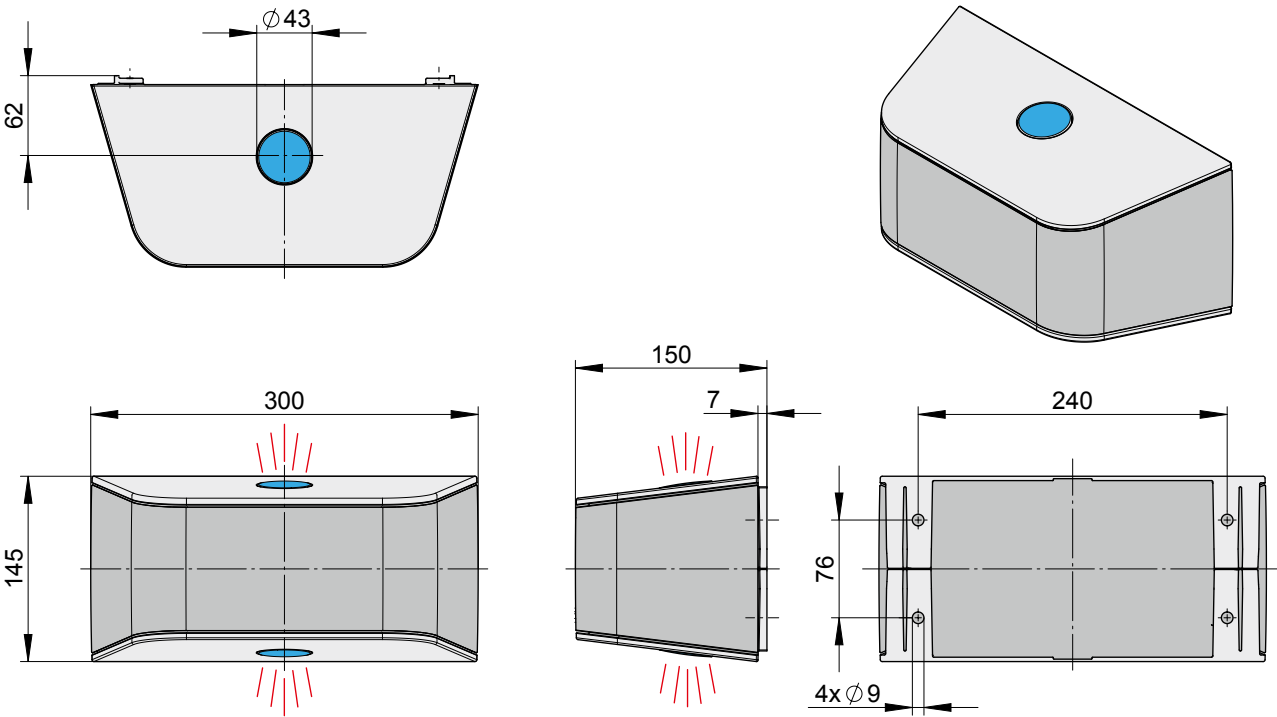
As a **continuous fixture profile** the markilux panel will always be supplied to order on the basis of a technical drawing prepared in the factory in accordance with the awning specification.



L = individual width, max. 7000 mm
x = fixing point separation, **by way of example**

dimensions in mm

markilux MX-4 wall light



Note: standard frame colours, see page 40

dimensions in mm

markilux MX-4 wall light lighting options

- LED-Spots RGB-WW bottom / top (Zigbee / io)
- Philips Hue Spots RGB-WW bottom or top (Zigbee)

Technical details LED-Spots Philips Hue

Operating voltage	230 V / 50 Hz
Power output of one LED spotlight	5,7 W
Light source	LED (230 V)
Number of transformers	1 unit
light temperature	RGB colour light change and white to warm white
IP protection type	IP 44
Service life	approx. 15.000 h
Plug connection	GU10

Technical details LED-Spots

Operating voltage	230 V / 50 Hz
Power output of one LED spotlight	5 W
Light source	LED (24 V)
Number of transformers	1 unit
Light temperature (RGB-WW)	RGB colour light change and warm white
IP protection type	IP 44
Service life	approx. 20.000 h
Plug connection (RGB-WW)	Mizu-P25